

Park Avenue South Retail

Great For Restaurant Use

45 East 30th Street

Madison and Park Avenue South

Landlord Contribution Available



Approximate Size:

Ground Floor: 3,780 s.f.

Mezzanine: up to 1,500s.f.

Basement: 723 s.f.

Neighborhood Info:

Steps from Park Avenue South.

Close proximity to the 6 train and bus service.

Frontage: Approx. 30 Feet

Ceilings: 18 Feet

Rent: Upon Request

Neighbors: California Pizza Kitchen, BoConcept, Domus Design Center, Wolfgang's Steakhouse, Dos Caminos, Les Halles, The Carlton Hotel, The Gansevoort, Warp & Weft Carpet, and Chipotle.

For more information, please contact exclusive agents:



212.490.1002

Peter Braus, Ext. 234

Executive Vice President
pbraus@srcny.com

Peter Levitan, Ext. 221

Associate Director
plevitan@srcny.com

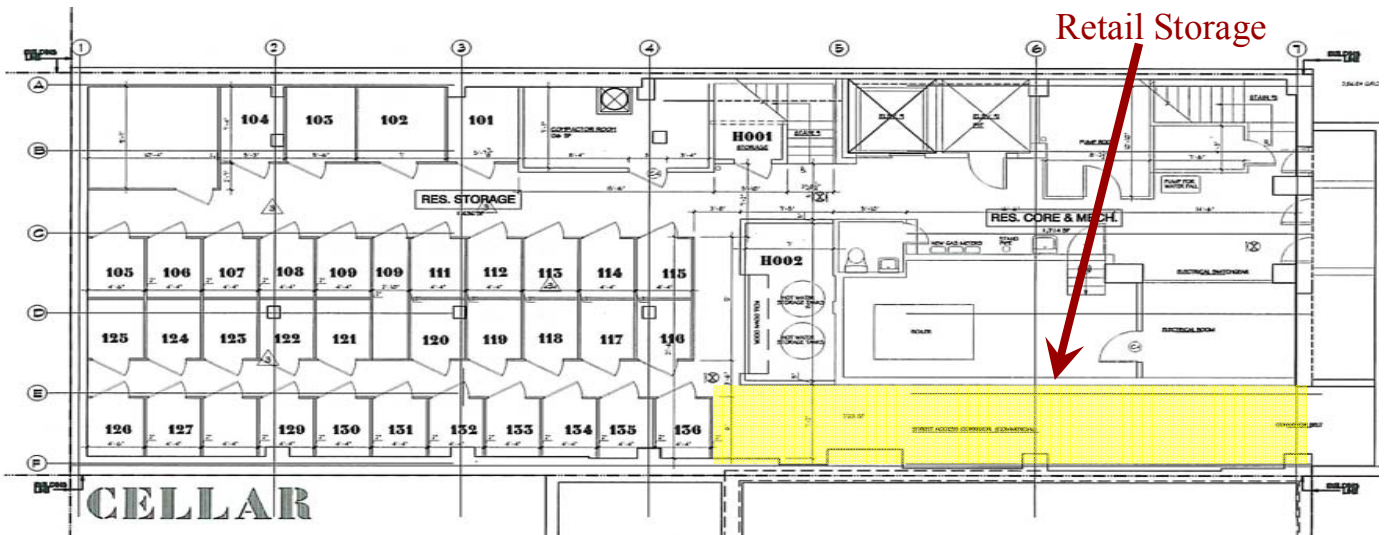
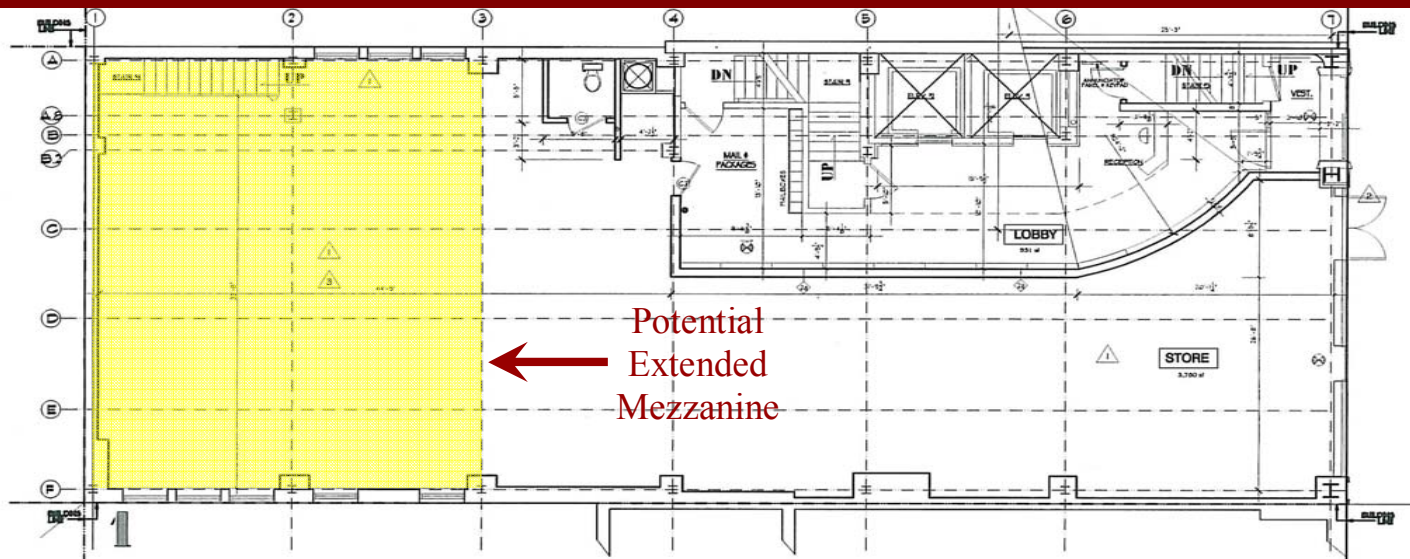
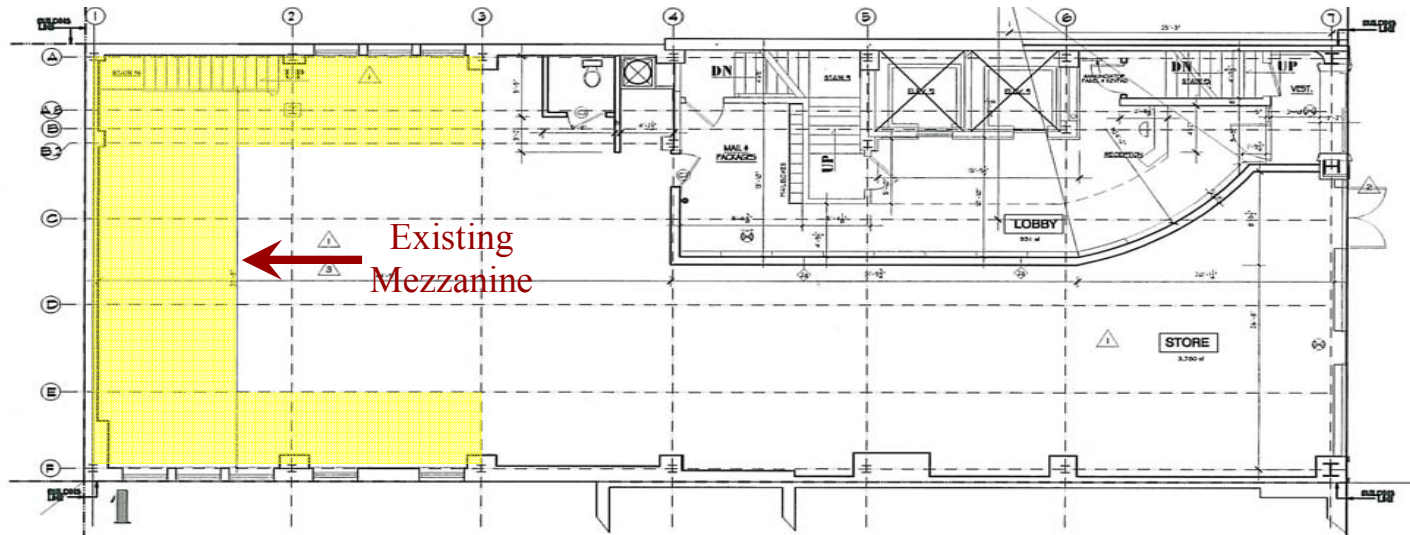
12 East 46th Street, Sixth Floor, New York, NY, 10017 | P 212.490.1002 | F 212.490.0978 | www.srcny.com

All information supplied is from sources reliable and is furnished subject to errors, omissions, modifications, removal of the listing from sale, and to any listing conditions, including the rates and manner of payment of commissions for particular offerings imposed by principals or agreed by this Company, the terms of which are available to principals or duly licensed brokers. Any square footage dimensions set forth are approximate. Co-Broke of one full commission.

Park Avenue South Retail

45 East 30th Street

Madison and Park Avenue South



12 East 46th Street, Sixth Floor, New York, NY, 10017 | P 212.490.1002 | F 212.490.0978 | www.srcny.com

All information supplied is from sources reliable and is furnished subject to errors, omissions, modifications, removal of the listing from sale, and to any listing conditions, including the rates and manner of payment of commissions for particular offerings imposed by principals or agreed by this Company, the terms of which are available to principals or duly licensed brokers. Any square footage dimensions set forth are approximate. Co-Broke of one full commission.