

On behalf of the Ownership, we are pleased to bring you the following retail space for lease:

Turn-key Boutique

Join **Scottrade**

Where East Meets West

123 Baxter Street

Hester and Canal



Space Features:

- **Ground Floor:** Approx. 1,400 s.f.
- **Frontage:** Approx 20'
- **Possession:** Arranged

Notes:

- Formerly occupied by an Art Gallery.
- Neighbors Kumon Learning Center, Scottrade, the De Soto School and new residential developments.
- Perfect for children's clothing/accessories, children's activities, art gallery, or non-venting food use.
- Close proximity to the 6, N, R, W, Q, J, M, and Z trains.
- This wonderful retail space is at the base of a new, stylish, full-service luxury condominium. At the nexus of Chinatown, Nolita, Soho, and Little Italy.

For more information contact the exclusive brokers:

Peter L. Braus, ext. 234
Executive Vice President
pbraus@srcny.com

An-Chi Miao, Ext 248
Managing Director
amiao@srcny.com



(212) 490-1002

12 East 46th Street, Sixth Floor, New York, NY, 10017 | P 212.490.1002 | F 212.490.0978 | www.srcny.com

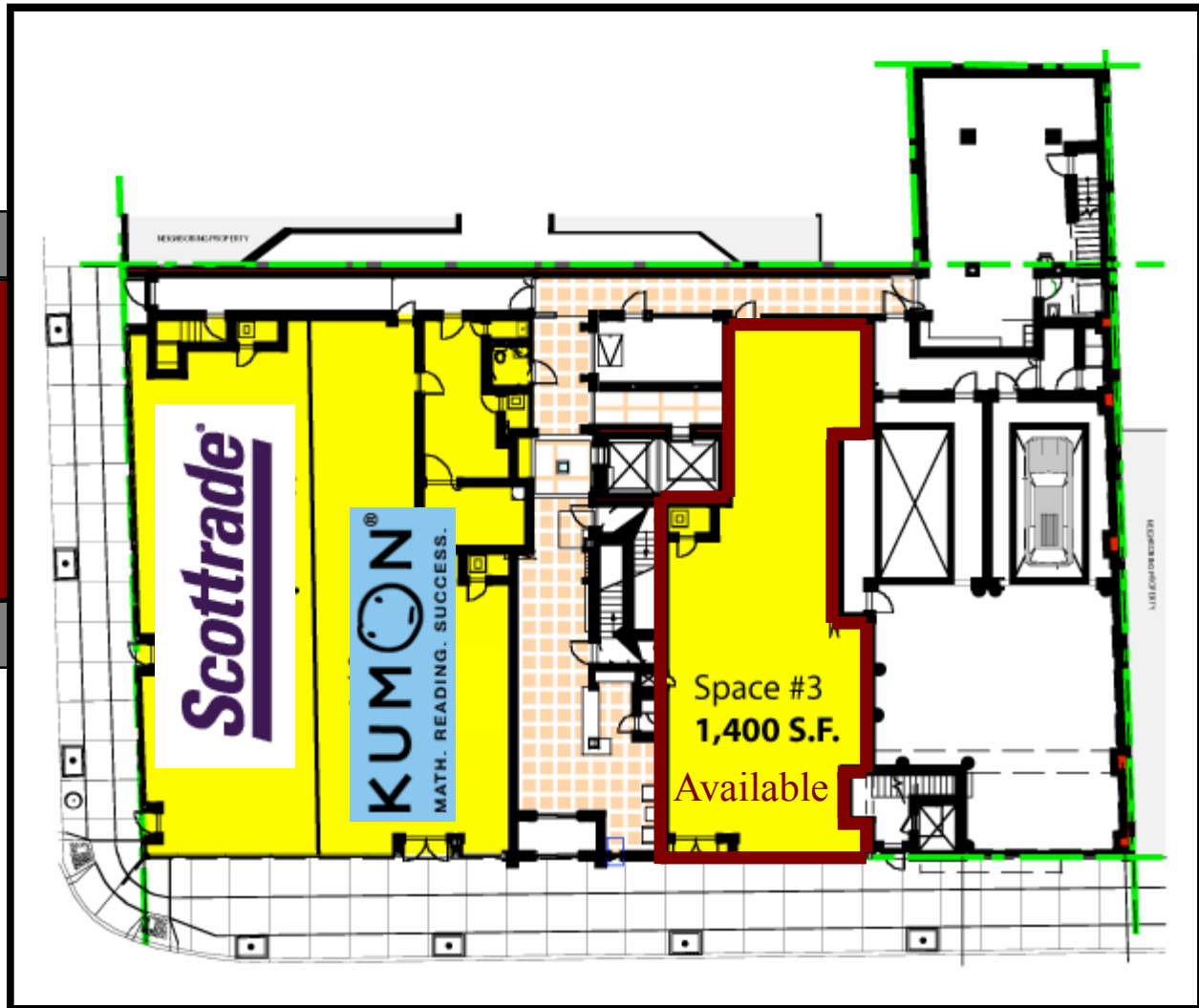
All information supplied is from sources reliable and is furnished subject to errors, omissions, modifications, removal of the listing from sale, and to any listing conditions, including the rates and manner of payment of commissions for particular offerings imposed by principals or agreed by this Company, the terms of which are available to principals or duly licensed brokers. Any square footage dimensions set forth are approximate. Co-Broke of one full commission.

On behalf of the Ownership, we are pleased to bring you the following retail space for lease:

Turn-key Boutique

123 Baxter Street

Hester and Canal



Peter L. Braus, ext. 234
Executive Vice President
pbraus@srcny.com

Peter E. Levitan. Ext 221
Managing Director
plevitan@srcny.com



(212) 490-1002